

GYMPIE

AND

SOME OF ITS GOLD MINES

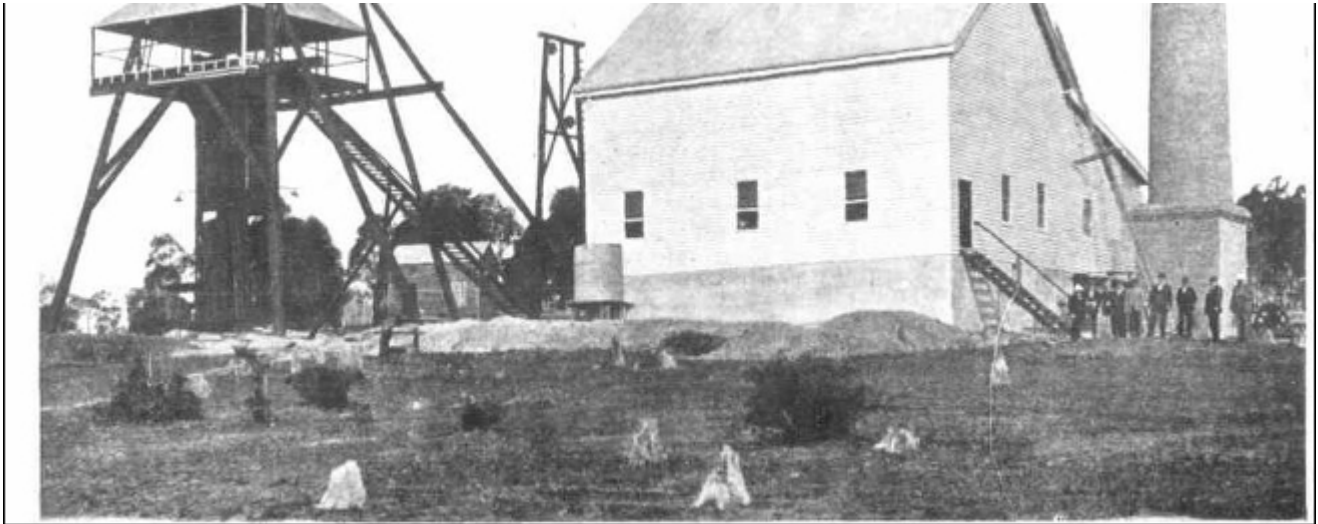
(BY OUR QUEENSLAND REPRESENTATIVE.)

GYMPIE, the prettily-situated town on the upper waters of the Mary, has up to the present added to the wealth of the world between eight and nine millions sterling. Yet, with this splendid record it does not receive all the attention from investors that it should do. There is no firmer believer in the future of Gympie than the Gympieite himself, from miner to director; they go on paying calls with an enthusiastic alacrity which speaks volumes for their confidence in the field.

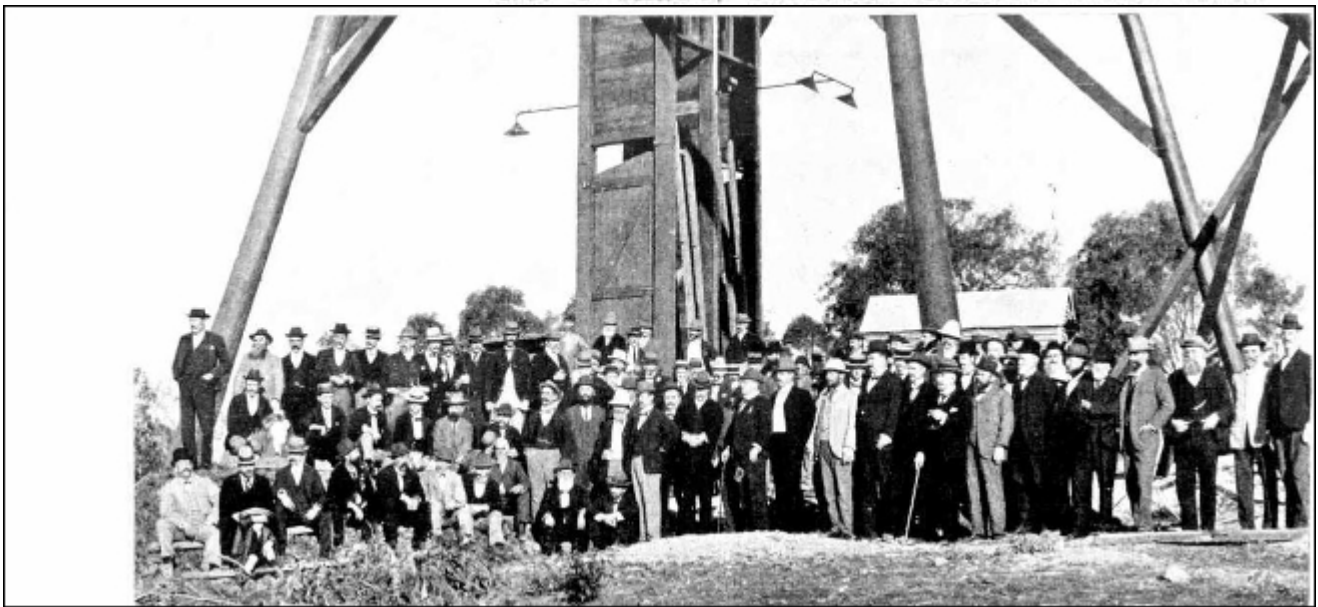
Last year the total production was 98,584 tons, which yielded 88,840oz., and the dividends amounted to £92,916, whilst the calls totalled £124,053. The fact of the calls exceeding the dividends is due to the large amount of prospecting done, but, according to the "Queenland Government Mining Journal," the dividends for the months of April and May this year are in advance of the calls.

The eastern ground is being largely prospected, and developments are shortly expected which will open up an entirely new field, and probably lead to a restoration of Gympie's best days. On the old portion of the field the developments which have taken place in the lower levels of the Smithfield and Phoenix Golden Pile mine give the impression that there is a great chance of a revival of prosperity in many of the old claims. The developments on the south of the Inglewood

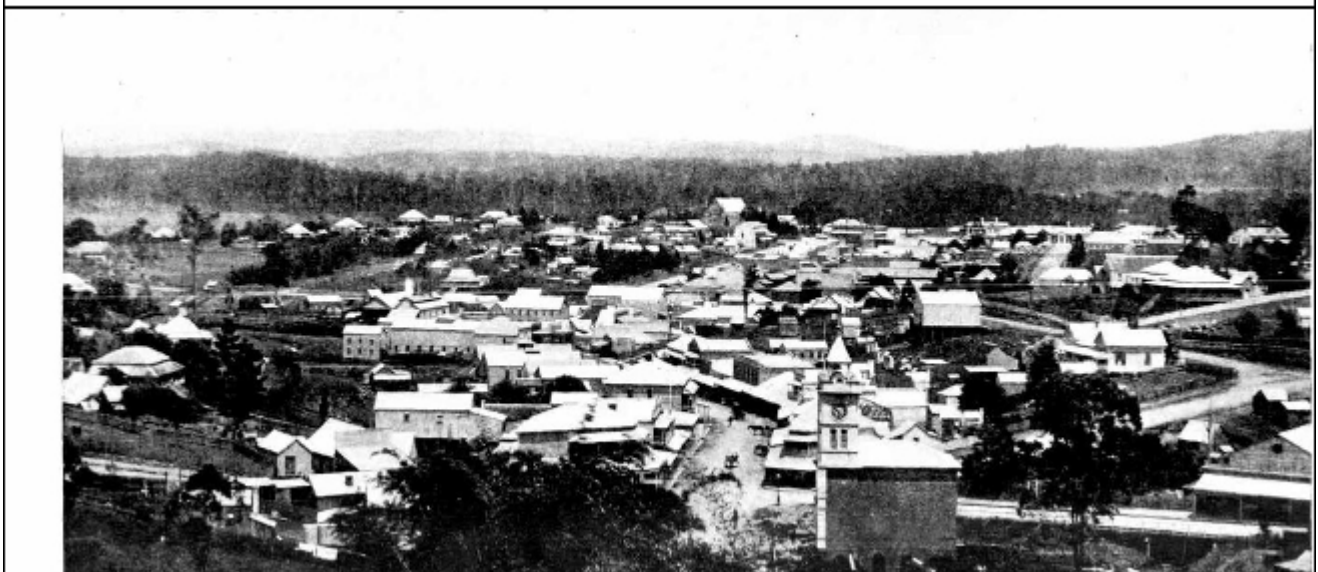




NO. 2 SHAFT, SCOTTISH GYMPIE GOLD MINE.



REPRESENTATIVE GATHERING OF MINING MEN AT THE STARTING OF THE NEW WINDING PLANT, SCOTTISH GYMPIE GOLD MINE.





VIEW OF GYMPIE FROM CALEDONIAN HILL.

dyke, which faults the country on the south-eastern portions of the field, point to the possibility of something of a favourable character occurring in this portion of the field. So that it will be seen that the Gympie man has every right to his high opinion.

Gympie is fortunate in the possession of a Mayor (Mr. D. Mulcahy) who has every confidence in its future and who spares no effort to

promote its welfare. Mr. Mulcahy was first elected alderman in 1897, chosen as Mayor the next year, and in 1899 appointed to succeed Mr. Ryland (the then Mayor) on his election to Parliament. This year he was again elected. Mr. Mulcahy is a native of New South Wales, being born at Bowling Alley Point, on the Peel River. He has been a resident of Gympie for over 20 years, and has been connected with the Stock Exchange since its inception. Another prominent

resident of Gympie is Mr. Matthew Laird, the well-known manager of the Scottish Gympie Gold Mines, Limited. He is a native of Port Glasgow, Scotland, and came to Queensland in 1886. After being in business in Brisbane for some years he settled in Gympie in 1894.

THE SCOTTISH GYMPIE GOLD MINES, LIMITED.

The Scottish Gympie Gold Mine is situated about two miles from Gympie in a south-easterly direction, and consists of four leases totalling 100 acres. The company has its headquarters in Glasgow, Mr. T. B. Hogan being the chairman, Mr. John M. Murray the secretary, whilst Mr. M. Laird acts as general manager. The mine manager is Mr. T. H. Smith, and surface manager is Mr. W. Bush, the company consisting of 30,000 shares of £1 each. It originally belonged to a local company, and was known as

the Eastern Monkland. In 1895 it was taken to Glasgow and floated by Mr. Laird and given its present name. When the new company started operations in March, 1895, the original shaft, known as the No. 1, was down 970ft.; at the present time its depth is 1340ft. The slate was met at 1402ft. Operations are being carried on at the 1334ft. and 1426ft. levels on the Nos. 2 and 3 reefs, which are very large. No. 2 is 130ft.

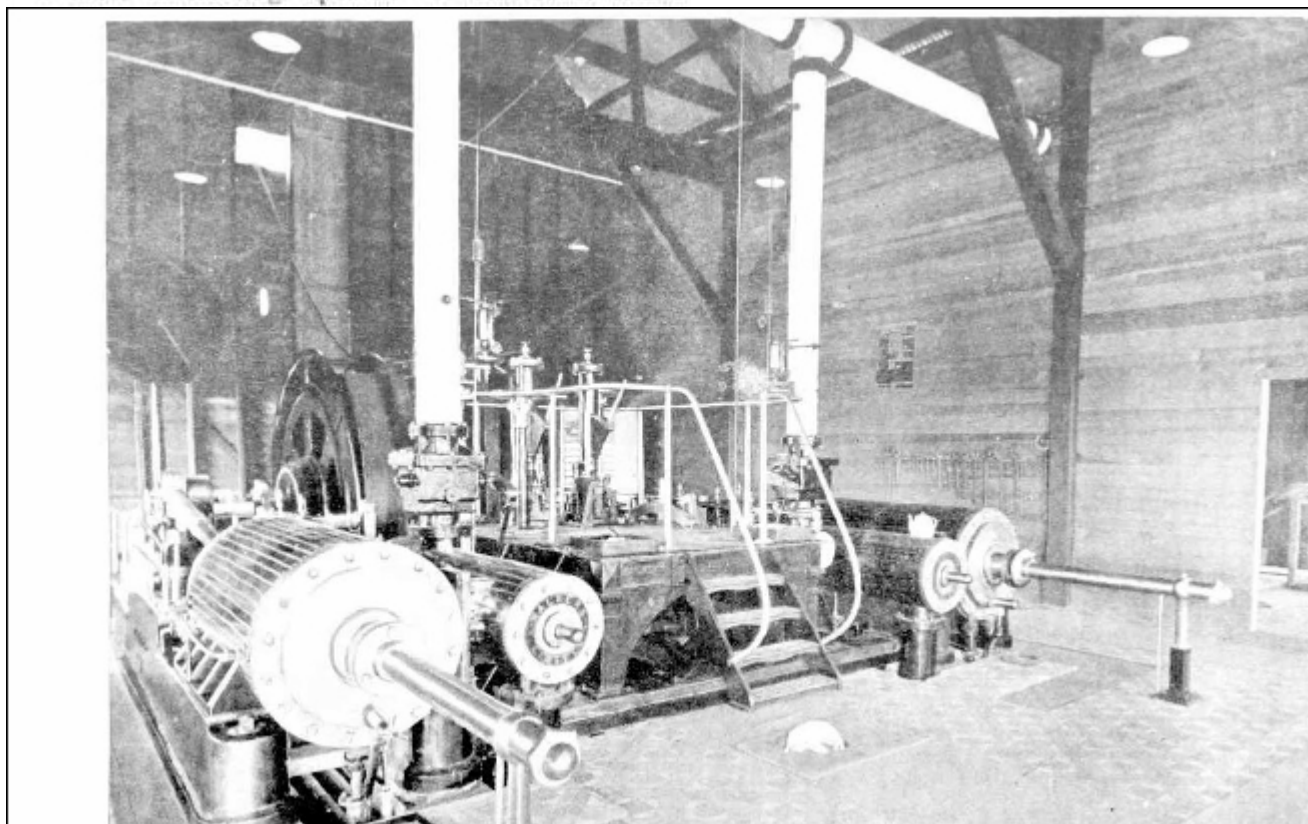
wide and No. 3 80ft. wide. So far five reefs have been discovered. Up to the present 59,088 tons have been crushed, realising 39,394oz., valued at £140,048, eight dividends being declared, amounting to £27,000, whilst £64,300 has been spent on the plant. The first wages-sheet was under £20; now it amounts to £1700 per fortnight.

There is much discussion in Gympie as to the benefit of foreign capital; but there is this much

to be said, that the Scottish Gympie mine has done much to alleviate the late dull times in Gympie; and if foreign capital would be the means of creating more mines of the stamp of the Scottish Gympie (which is second in completeness of plant only to the Mount Morgan mine), it would be better for the colony.

On Saturday, June 16, a most pleasing ceremony took place at the mine. It was the starting

of the new winding machinery on the No. 2 shaft. The warden of the field (Mr. F. P. Parkinson), in starting the machinery, expressed appreciation of the manner in which the Scottish Gympie had conducted operations on the field, and pointed out that they now had one of the finest plants in the colony, and proposed "Success to the Company," coupled with the name of the general manager. Mr. Laid, in acknowledgment of the toast, made a most interesting speech. Several other toasts





NEW WINDING PLANT, SCOTTISH GYMPIE GOLD MINE.



VIEW OF ONE MILE.

were proposed, and, altogether, a most pleasant afternoon was spent.

THE MACHINERY.

Our illustrations show the new winding plant and a section of the battery plant. The winding plant is one of the largest in the colony, and is certainly the most modern. The battery plant, which is the largest in Queensland, consists of a hundred head of stampers. These two plants—in fact, nearly the whole of the machinery of the company—have been supplied by Walker's, Limited, of Maryborough.

WALKER'S, LIMITED.

This firm's large engineering works occupy a foremost place amongst the industries of Queensland, and, indeed, are fully entitled to be placed in the front rank when compared with similar works established in any part of the Australian colonies. They have supplied nearly all the principal mines at Gympie, Croydon, Charters Towers, and Mount Morgan with the most

Gympie, Croydon, Charters Towers, and Mount Morgan with the most modern mining machinery. Their operations are not confined to Queensland; they have completed orders for New South Wales, Victoria, South Australia, and Western Australia, and in many instances the orders have been duplicated. The company's operations cover all the important branches of engineering work, embracing sugar mill and meat works machinery, bridgework, dredges, and dredging plant, locomotive construction, &c. They are also shipbuilders on a large scale. To give an idea of the magnitude of the company's operations it need only be mentioned that their works cover 11 acres, and that

they turn out a locomotive every fortnight. The managing director, Mr. W. F. Harrington, has just returned from a visit to the old country, the visit being with the idea of placing his company in touch with the latest developments of the engineering world.

THE NEW SOUTH GYMPIE

of the engineering world.

THE NO. 1 SOUTH GYMPIE GOLD MINES, LIMITED.

The mine is south of and adjoining the Scottish Gympie mine on the same line of reef. They are sinking a shaft which is at present down 1270ft., and are passing through the same class of country as the Scottish Gympie, consequently have every right to expect to strike the same reef. Since the beginning of May, 1899, they have sunk 1070ft. The capital of the company is £12,000, consisting of 48,000 shares at 5s each, the directorate being Messrs. D. Mulcahy (chairman), M. Laird, M. Lane, P. Duckworth, G. F. Lister, J. Flood (secretary), and J. Mahony (mine manager).

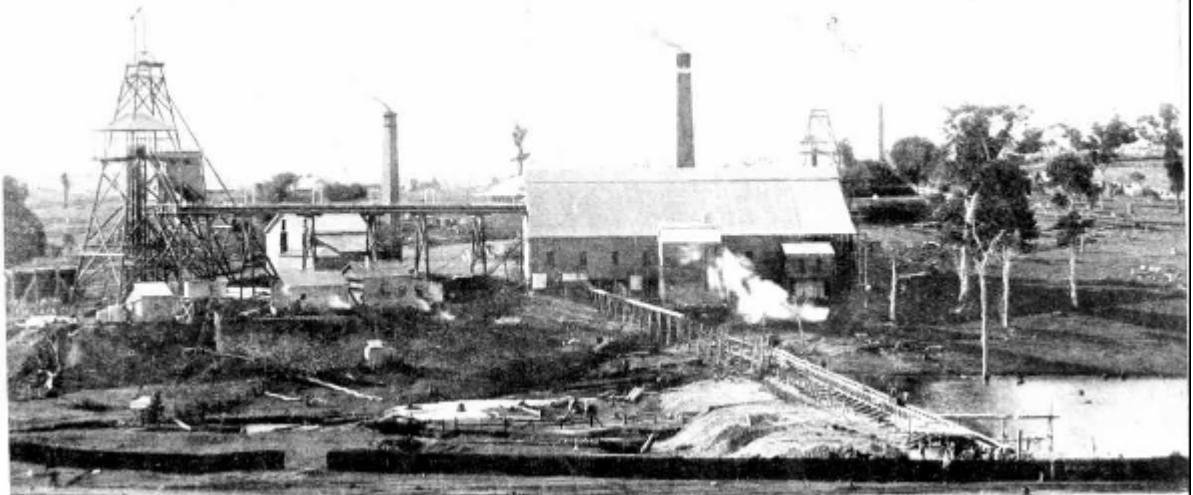
THE NO. 2 SOUTH GREAT EASTERN GOLD-MINING COMPANY, LIMITED.

This mine is an example of what steady perseverance, unflinching faith, and discriminate speculation will do on a goldfield. It has a capital of £12,000, divided in 48,000 shares of 5s each, with an area of 25 acres. The directors are Messrs. E. M'Guinness (chairman), E. A. Gaden, J. Donovan, F. Kearton, and W. Suthers, the secretary being Mr. J. Flood, and Mr. J. Harris mine manager. This mine last year had the distinction of being the biggest dividend payer on Gympie. It is splendidly equipped with the best up-to-date machinery, including a powerful winding plant. Our illustration shows the eastern shaft which it is intended to sink to the depth of 1450ft. At present it is down 1122ft., with levels at 860, 884, and 970 feet. It is not merely with a view to satisfy immediate requirements only that the





THE NO. 2 SOUTH GREAT EASTERN (EASTERN SHAFT.)



NO. 1 SHAFT. SCOTTISH GYMPIE GOLD MINE





VIEW OF NO. 3 LEVEL SCOTTISH GYMPIE GOLD MINE—DEPTH 1428 FEET.

eastern shaft is being sunk. No. 1, 2, and 3 reefs now being worked so successfully by the Scottish Gympie Company, will pass through the No. 2 South Eastern ground, giving them, according to plan, some 800 or 900 feet along the lines of these reefs to work out. In the same bed of slate both the Scottish and the No. 2 South Eastern themselves are operating upon, and beyond this there is an additional bed of slate which both the South Eastern and the Scottish Glanmire and Monkland passed through in their respective shafts, and about 150ft. under the main bed, and which theoretically the No. 2 South Eastern are due for when the time arrives for them to go for it. The reef which the Scottish Company reported cutting about the beginning of November at a depth of 1334ft. will also be cut in the No. 2 South Great Eastern about 150ft. east of their new shaft. The returns from their eastern shaft since September, 1897, to June 1, 1900, is 20,955 tons, realising 32,282oz, valued at £113,852 15s 5d. Dividends paid, £57,068 14s 2d, equal to £1 3s 11d per share. All the gold has been obtained from one reef. There is a reserve fund of £5000, and there is

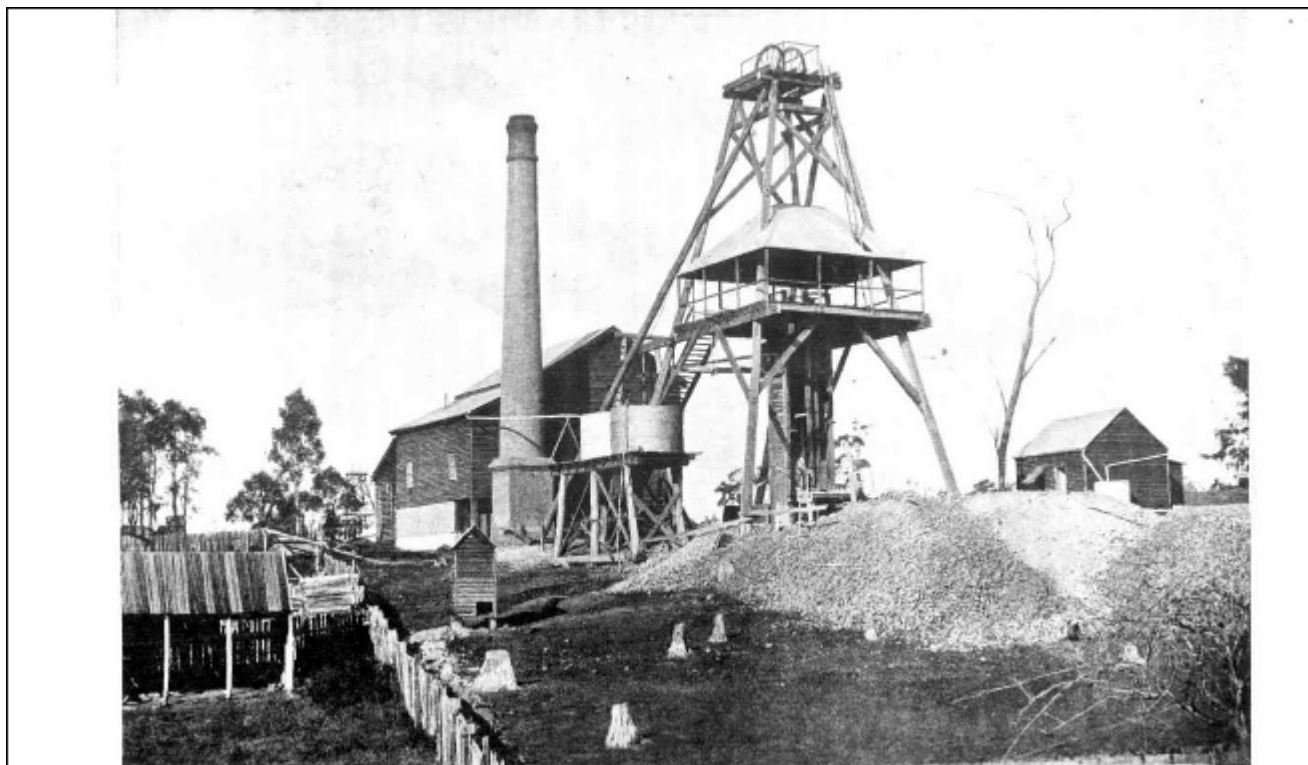
kept in hand £800 for working expenses. It is intended to equalise crushings and pay dividends at the rate of 1s per month; any balances over the dividend and working expenses will be declared as a bonus at different periods.

Our photographs are by Bevan, and we are much indebted to the excellent reports of the "Gympie Times" for a portion of our information.

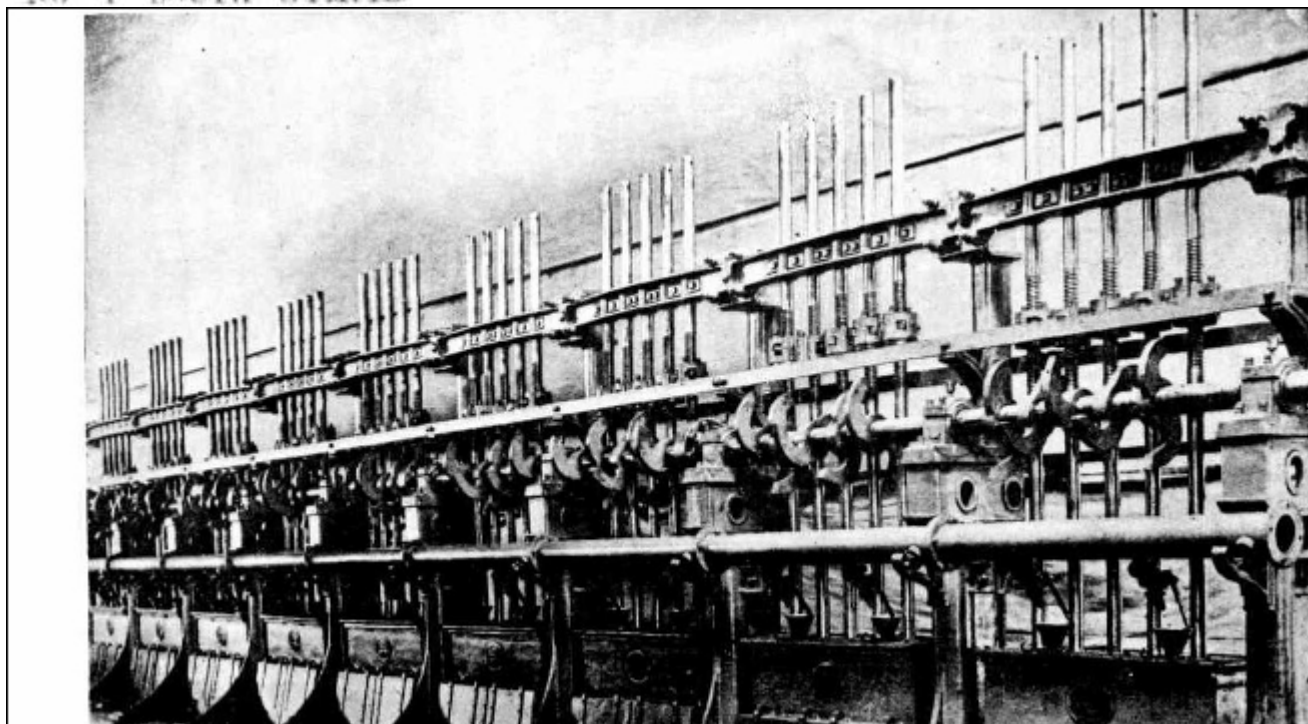
The "Druggist's Circular" recently had an interesting article upon the risks of the syphon, in which a number of damage cases are cited, and it recommends that a special warning label, setting forth the risks of handling syphons, be placed on every bottle. The moral obligation to protect one's fellows from danger is obvious enough, and pharmacists and others who sell syphons could readily force the bottler to affix such labels. The syphon should

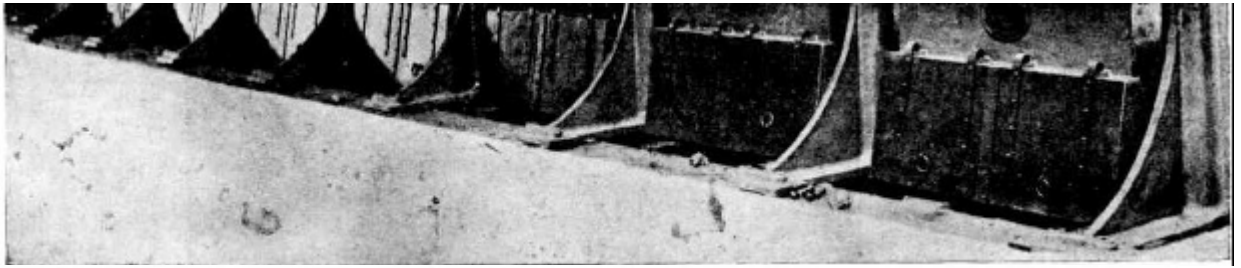
the bottler to affix such labels. The syphon should always be carried by the head. Children should be warned to do this, because they are apt to find the bottles heavy and clasp them close to the body. Sudden changes of temperature should be avoided, and the cold bottle should not be grasped with the hand.

CADBURY'S COCOA.—Refreshing, nourishing, invigorating.*



NO. 1 SOUTH GYMPIE





SCOTTISH GYMPIE GOLD MINES LIMITED.—SECTION OF BATTERY PLANT.



MR D. MULCAHY,
Mayor of Gympie.



MR. M. LAIRD,
General Manager Scottish Gympie Gold Mine,

